

QUICK REFERENCE GUIDE FOR INFECTIOUS DISEASES/CONDITIONS AND REQUIRED PRECAUTIONS

I. PURPOSE

The following table lists selected infectious diseases/conditions and delineates the room placement, specific precautions and pertinent instructions. It provides a reference for nurses/healthcare workers (HCWs) and physicians responsible for the appropriate placement and management of patients with infectious diseases and conditions. The table is not intended to be all inclusive. If a disease or condition is not listed, use Standard Precautions and contact the Infection Control and Epidemiology Department (ICED) for assistance.

II. POLICY

Standard/Universal Precautions and good hand hygiene practices is used by all HCWs for all patients regardless of diagnosis. Additional precautions/isolation is initiated as indicated in Appendices A and B below.

III. IMPLEMENTATION

- A. If a disease or condition is not listed in Appendix A, use Standard Precautions. The Appendix is not intended to be all inclusive, but rather a guideline for commonly recognized issues.
- B. If a patient requires Respiratory Precautions/Isolation, see Appendix B to determine if a negative airflow room is necessary.
- C. A private room is recommended for any patient if the nurse/HCW determines that the patient's secretions/excretions cannot be contained within the patient's immediate environment.
- D. For more information, refer to the policies on [Standard Precautions](#), [Contact Precautions](#), [Respiratory Precautions](#) and [Droplet Precautions](#) elsewhere in Section 5 of the *Infection Control Manual*.
- E. For questions, contact the ICED (extension 5-1106 or pager 16167).

Appendices:

- Appendix A: Quick Reference Guide for Infectious Diseases/Conditions and Required Precautions
- Appendix B: Quick Reference Guide for Placement of Patients: **Negative** Airflow Rooms
- Appendix C: Quick Reference Guide for Placement of Patients: **Positive** Airflow Rooms

Approved by: Infection Control Committee, 7/09
Quality Improvement and Patient Safety Committee, 8/09
Stanford Hospital and Clinics Medical Executive Committee, 9/09
Stanford Hospital and Clinics Board Credentials, Policies and Procedures Committee, 9/09

Original Date: 7/91
Reviewed Date: 8/93, 1/98
Revised Date: 6/97, 1/01, 3/02, 8/03, 12/04 (addition of Appendix B), 10/05, 8/06, 10/07, 2/08, 6/09, 8/09

This document is intended for use by staff of Stanford Hospital and Clinics.

No representations or warranties are made for outside use.

Not for outside reproduction or publication without permission.

Direct inquiries to: Infection Control and Epidemiology -- (650) 725-1106
Stanford Hospital and Clinics
Stanford, CA 94305

Appendix A

**QUICK REFERENCE GUIDE FOR INFECTIOUS DISEASES/CONDITIONS AND
REQUIRED PRECAUTIONS**

IF A DISEASE OR CONDITION IS NOT LISTED IN THIS TABLE USE STANDARD PRECAUTIONS				
DISEASE/CONDITION	PRECAUTIONS	ROOM PLACEMENT	SPECIAL INSTRUCTIONS	DURATION OF PRECAUTIONS
Abscess, drainage contained	Standard	Any room		
Abscess, major, drainage uncontained	Contact	Private room		Until drainage stops or can be contained with dressing.
Acquired Immunodeficiency Syndrome (AIDS)	Standard	Any room		
Adenovirus • Gastroenteritis • Pneumonia	Standard Droplet and Contact	Any room if diarrhea is contained. Private room if diarrhea is not contained. Any room for Droplet Precautions. Keep door closed. Exception: If patient on E1, place in Room E139 only. See Appendix B.	Contact Precautions may be used at the discretion of the nurse/HCW if the patient's hygiene is poor and the environment is likely to be soiled or to control institutional outbreaks. • Surgical style mask with face shield or surgical style mask plus goggles for persons entering room. • Patient should wear surgical style mask when leaving room • Promptly notify the ICED,* x 5-1106 or pager 16167 • For more information see <i>ICM</i> Policy 5.41, Droplet Precautions • For more information see <i>ICM</i> Policy 5.30, Contact Precautions	Durations of illness
Amebiasis	Standard	Any room		
Anthrax, • Cutaneous • Pulmonary	Standard Standard	Any room Any room	Contact Precautions if large amounts of drainage cannot be contained with dressings	
Antibiotic-associated colitis- See <i>Clostridium difficile</i>				

IF A DISEASE OR CONDITION IS NOT LISTED IN THIS TABLE USE STANDARD PRECAUTIONS				
DISEASE/CONDITION	PRECAUTIONS	ROOM PLACEMENT	SPECIAL INSTRUCTIONS	DURATION OF PRECAUTIONS
Aspergillosis	Standard	Any room		
Avian Influenza-See <i>Influenza, Pandemic</i>				
Botulism	Standard	Any room		
<i>Burkholderia cepacia</i> -infection or colonization, See <i>Multi-Drug Resistant Organisms (MDRO)</i>				
Campylobacteriosis See <i>Gastroenteritis</i>				
Cat Scratch Fever	Standard	Any room		
Chickenpox (Varicella)	Respiratory and Contact	Private room, negative air pressure room with anteroom. Keep door closed.	<ul style="list-style-type: none"> • Persons who have not had chickenpox should not enter room for any reason. • No mask necessary for immune caregivers and visitors. • Wear gown and gloves for direct contact with lesion material. • Patient is to wear a surgical mask when leaving room. • For more information see <i>Infection Control Manual (ICM) Policy 5.40, Respiratory Precautions</i> and 6.10, Chickenpox and Herpes Zoster Patient Management and Exposure Follow-up. 	Until all crops of lesions are crusted over.
Chickenpox exposed patient with: <ul style="list-style-type: none"> • Negative history for chickenpox or • Chickenpox vaccine and negative Varicella titer. 	Respiratory and Contact	Private room, negative air pressure room with anteroom. Keep door closed.	<ul style="list-style-type: none"> • Persons who have not had chickenpox should not enter room for any reason. • No mask necessary for immune caregivers and visitors. • Wear gown and gloves for contact with lesion material. • Patient is to wear a surgical mask when leaving room. • For more information see <i>ICM Policy 5.40, Respiratory Precautions</i> and 6.10, Chickenpox and Herpes Zoster Patient Management and Exposure Follow-up. 	Exposed susceptible patients should be placed in respiratory isolation from day 10 post initial exposure to day 21(day 28 if VZIG given) post last exposure.
Cholera See <i>Gastroenteritis</i>				

IF A DISEASE OR CONDITION IS NOT LISTED IN THIS TABLE USE STANDARD PRECAUTIONS				
DISEASE/CONDITION	PRECAUTIONS	ROOM PLACEMENT	SPECIAL INSTRUCTIONS	DURATION OF PRECAUTIONS
<i>Clostridium difficile</i> diarrhea	Contact	Private room	<ul style="list-style-type: none"> Assess need to DC antibiotic Avoid use of shared electronic thermometers Contact Housekeeping to use Bleach Protocol to clean room when Contact Precautions DC'd For more information see <i>ICM</i> Policy 5.30, Contact Precautions 	<ul style="list-style-type: none"> 48 hours after diarrhea has resolved, patient is continent with no risk of soiling environment and Off antibiotics for <i>C. diff</i> treatment for 48 hours.
Coccidioidomycosis (Valley Fever)	Standard	Any room		
Creutzfeld-Jakob Disease	Standard	Any room	Refer to OR department-specific policies for additional information related to the OR.	
Cryptococcosis	Standard	Any room		
Cryptosporidiosis See <i>Gastroenteritis</i>				
Cystic Fibrosis without any multi-drug resistant organism	Standard	Private room	Do no cohort with another cystic fibrosis patient.	
Cytomegalovirus (CMV)	Standard	Any room		
Diarrhea, controlled etiology unknown	Standard	Any room	Patient is able to use the bathroom.	
Diarrhea, uncontrolled etiology unknown	Standard	Private room	Contact Precautions may be used at the discretion of the nurse/HCW if the patient is incontinent and the environment is likely to be soiled.	Duration of illness, patient no longer soils environment
Diphtheria, Cutaneous	Contact	Private room	<ul style="list-style-type: none"> Promptly notify the Infection Control and Epidemiology Department (ICED*), x 5-1106 or pager 16167 Report promptly to Santa Clara County Health Department (408) 885-4214. For more information see <i>ICM</i> Policy 5.30, Contact Precautions 	Until 2 cultures taken at least 24 hours apart are negative for <i>Corynebacterium diphtheriae</i> .

IF A DISEASE OR CONDITION IS NOT LISTED IN THIS TABLE USE STANDARD PRECAUTIONS				
DISEASE/CONDITION	PRECAUTIONS	ROOM PLACEMENT	SPECIAL INSTRUCTIONS	DURATION OF PRECAUTIONS
Diphtheria, Pharyngeal	Droplet	Private room, no special ventilation required. Keep door closed. Exception: If patient on E1, place in Room E139 only. See Appendix B.	<ul style="list-style-type: none"> Surgical style mask with face shield or surgical style mask plus goggles for all persons entering room. Patient to wear surgical style mask when leaving room. For more information see <i>ICM</i> Policy 5.41, Droplet Precautions Promptly notify the ICED*, x 5-1106 or pager 16167 Report promptly to Santa Clara County Health Department (408) 885-4214. For more information see <i>ICM</i> Policy 5.41, Droplet Precautions 	Until 2 cultures from both nose and throat taken at least 24 hours apart are negative for <i>Corynebacterium diphtheriae</i> .
Drug Resistant Microorganisms, See <i>Multi-Drug Resistant Organisms (MDRO's)</i>				
Ebola-Marburg Virus See <i>Hemorrhagic Fever</i>				
Encephalitis (viral)	Standard	Any room		
ESBL See <i>MDRO</i>				
Gas Gangrene	Standard	Any room		
Gastroenteritis (not listed elsewhere) caused by: <ul style="list-style-type: none"> Campylobacter sp Cholera Cryptosporidium sp E. coli (0157:H7) Giardia Rotavirus Salmonella sp Shigella sp Vibrio Viral 	Standard	Any room if diarrhea is contained. Private room if diarrhea is not contained.	Contact Precautions may be used at the discretion of the nurse/HCW if the patient's hygiene is poor and the environment is likely to be soiled or to control institutional outbreaks.	Durations of illness
German Measles See <i>Rubella</i>				
Giardiasis See <i>Gastroenteritis</i>				
<i>Haemophilus influenzae</i> meningitis, See <i>Meningitis</i>				
Hansen's Disease (leprosy)	Standard	Any room		

IF A DISEASE OR CONDITION IS NOT LISTED IN THIS TABLE USE STANDARD PRECAUTIONS				
DISEASE/CONDITION	PRECAUTIONS	ROOM PLACEMENT	SPECIAL INSTRUCTIONS	DURATION OF PRECAUTIONS
Hemorrhagic Fevers, including Lassa and Ebola virus fevers	Respiratory and Contact	Private room, negative air pressure with anteroom.	<ul style="list-style-type: none"> • Only essential personnel should enter the patient room. • N95 Respirator mask for all persons entering room. • Protective eyewear for care of patients who are coughing, vomiting, bleeding, disoriented or uncooperative, and during the performance of invasive procedures. • Wear gown, gloves and shoe covers to enter room. • Don and remove protective wear in the anteroom. • Discard <i>all</i> waste in red bags. • Promptly notify the ICED*, ext. 5-1106 or pager 16167 • Report promptly to Santa Clara County Health Department (408) 885-4214. 	Duration of hospitalization
Hepatitis A <ul style="list-style-type: none"> • Continent patient • Incontinent patient 	Standard Contact	Any room Private room		Until continent
Hepatitis B, C, D	Standard	Any room	See hemodialysis department-specific policies for additional information	
Herpes Simplex	Standard	Any room		
Herpes Zoster (Shingles or Varicella Zoster) <ul style="list-style-type: none"> • Disseminated disease (including pneumonia) in any patient • Localized disease in an immunocompromised patient Herpes Zoster (Shingles or Varicella Zoster) Continued	Respiratory and Contact	Private room, negative air pressure room with anteroom. Keep door closed.	<ul style="list-style-type: none"> • Persons who have not had chickenpox should not enter room for any reason. • No mask necessary for immune caregivers and visitors. • Wear gown and gloves for direct contact with lesion material. • Patient is to wear a surgical mask when leaving room. • For more information see <i>ICM</i> Policy 5.30, Contact Precautions, Policy 5.40, Respiratory Precautions and 6.10, Chickenpox and Herpes Zoster Patient Management and Exposure Follow-up. 	Duration of illness and until all lesions are completely crusted over.

IF A DISEASE OR CONDITION IS NOT LISTED IN THIS TABLE USE STANDARD PRECAUTIONS				
DISEASE/CONDITION	PRECAUTIONS	ROOM PLACEMENT	SPECIAL INSTRUCTIONS	DURATION OF PRECAUTIONS
Herpes Zoster (Shingles or Varicella Zoster) Localized in a patient with an intact immune system with lesions that can be contained/covered and lesions confined to 1 dermatome	Standard	Private room	<ul style="list-style-type: none"> Persons who have not had chickenpox should not enter room for any reason. Place a notice on the door stating only immune staff should enter the room. No mask necessary for immune caregivers/visitors. Wear gown/gloves for direct contact with lesion material. 	Until all lesions are completely crusted over
Human Metapneumovirus, <i>See Metapneumovirus (Human)</i>				
Impetigo	Contact	Private room.	For more information see <i>ICM</i> Policy 5.30, Contact Precautions	For 24 hours, after antibiotic therapy is initiated
Influenza (Type A, B and C,)	Droplet	Private room or may be cohorted with patient with like type. No special ventilation. Keep door closed. Exception: If patient on E1, place in Room E139 only. Or if E139 not available, place in a double door room.	<ul style="list-style-type: none"> Surgical style mask with face shield or surgical style mask plus goggles for persons entering room. Patient should wear mask when leaving room. For more information see <i>ICM</i> Policy 5.41, Droplet Precautions. 	For 7 days after onset of symptoms.
Influenza: Novel H1N1 or H1N1-2009	Respiratory/ Droplet	Private, negative air pressure room with an anteroom. If room not available place in a private room with HEPA filter. Keep door closed. Exception: If patient on E1, place in Room	<ul style="list-style-type: none"> Call 498-4400 to order a HEPA filter. N95 mask plus mask with face shield OR N95 mask plus splash shield for all staff entering room. Patient should wear surgical mask when leaving room. For more information see <i>ICM</i> Policy 6.91 Novel H1N1 Influenza 2009. 	For 7 days after onset of symptoms or 24 hours after resolution of symptoms whichever is longer.

IF A DISEASE OR CONDITION IS NOT LISTED IN THIS TABLE USE STANDARD PRECAUTIONS				
DISEASE/CONDITION	PRECAUTIONS	ROOM PLACEMENT	SPECIAL INSTRUCTIONS	DURATION OF PRECAUTIONS
		E139 only. Or if E139 not available, place in a double door room.		
Influenza, (Avian)	Respiratory and Contact	Private, room negative air pressure room with ante-room. Keep door closed.	<ul style="list-style-type: none"> • N95 respirator mask for hospital personnel entering room. • Requires fit testing by designated individual. See manager for more information. • Patient to wear surgical style mask when leaving room. • Promptly notify the ICED*, ext. 5-1106 or pager 16167. • Report promptly to Santa Clara County Health Department (408) 885-4214. • For more information see <i>ICM</i> Policy 6.90. 	Duration of hospitalization
Kawasaki Syndrome	Standard	Any room		
Lassa Fever, See <i>Hemorrhagic Fever</i>				
Legionellosis	Standard	Any room		
Lice, See <i>Pediculosis</i>				
Listeriosis	Standard	Any room		
Malaria	Standard	Any room		
Measles (Rubeola)	Respiratory	Private room, negative air pressure room with an anteroom. Keep door closed.	<ul style="list-style-type: none"> • No mask necessary for immune persons entering room. • Promptly notify the ICED*, x 5-1106 or pager 16167 • Report promptly to Santa Clara County Health Department (408) 885-4214. • For more information see <i>ICM</i> Policy 5.40, Respiratory Precautions and 6.20, Measles Patient Management and Exposure Follow-up. 	For 5 days after onset of rash. If patient is immunocompromised, for duration of hospitalization. Room may not be occupied for 3 hours after patient is discharged.

IF A DISEASE OR CONDITION IS NOT LISTED IN THIS TABLE USE STANDARD PRECAUTIONS				
DISEASE/CONDITION	PRECAUTIONS	ROOM PLACEMENT	SPECIAL INSTRUCTIONS	DURATION OF PRECAUTIONS
Meningitis due to <i>Haemophilus influenzae</i>	Droplet	Private room, no special ventilation required. Keep door closed. Exception: If patient on E1, place in Room E139 only. See Appendix B.	<ul style="list-style-type: none"> • Surgical style mask with face shield or surgical style mask plus goggles for persons entering room. • Patient should wear surgical style mask when leaving room. • Promptly notify the ICED*, x 5-1106 or pager 16167. • Report promptly to Santa Clara County Health Department (408) 885-4214. • For more information see <i>ICM</i> Policy 5.41, Droplet Precautions 	For 24 hours after appropriate antibiotic therapy is initiated
Meningitis, suspected or confirmed, due to <i>Neisseria meningitides</i>	Droplet	Private room, no special ventilation required. Keep door closed. Exception: If patient on E1, place in Room E139 only. See Appendix B.	<ul style="list-style-type: none"> • Surgical style mask with face shield or surgical style mask plus goggles for persons entering room. • Patient should wear surgical style mask when leaving room • Promptly notify the ICED,* x 5-1106 or pager 16167 • Report promptly to Santa Clara County Health Department (408) 885-4214. • For more information see <i>ICM</i> Policy 5.41, Droplet Precautions and 6.30, Meningococcal Meningitis or Meningococemia Exposure Follow-up. 	For 24 hours after appropriate antibiotic therapy is initiated
Meningitis, other bacterial such as Listeria or Strep	Standard	Any room		
Meningitis (Viral)	Standard	Any room		
Meningococcal Infections (meningitis, meningococemia, pneumonia)	Droplet	Private room, no special ventilation required. Keep door closed. Exception: If patient on E1, place in Room E139 only. See Appendix B.	<ul style="list-style-type: none"> • Surgical style mask with face shield or surgical style mask plus goggles for persons entering room. • Patient should wear surgical style mask when leaving room • Promptly notify the ICED,* x 5-1106 or pager 16167 • Report promptly to Santa Clara County Health Department (408) 885-4214. 	For 24 hours after appropriate antibiotic therapy is initiated

IF A DISEASE OR CONDITION IS NOT LISTED IN THIS TABLE USE STANDARD PRECAUTIONS				
DISEASE/CONDITION	PRECAUTIONS	ROOM PLACEMENT	SPECIAL INSTRUCTIONS	DURATION OF PRECAUTIONS
			<ul style="list-style-type: none"> For more information see <i>ICM</i> Policy 5.41, Droplet Precautions For more information see <i>ICM</i> Policy 5.41, Droplet Precautions and 6.30, Meningococcal Meningitis or Meningococemia Exposure Follow-up. 	
Metapneumovirus (Human) in an immunocompromised host receiving Ribavirin Therapy	Ribavirin Precautions and Contact	Private room, negative air pressure. Keep door closed. If patient on E1 place in room E139. (Refer to Appendix B of this policy.)	<ul style="list-style-type: none"> Every time, upon entry into room, wear gown and gloves. For more information see <i>ICM</i> Policy 5.30, Contact Precautions Pregnant healthcare workers must not care for patient. <p><i>Ribavirin Precautions Include:</i></p> <ul style="list-style-type: none"> N95 mask for persons entering room during a treatment. Gloves and gown must be worn when in contact with the patient. Remove your soft contacts or wear goggles Follow instructions on the Ribavirin precautions sign. For more information regarding Ribavirin contact the RT shift supervisor (37709) 	<p>Ribavirin Precautions for the duration of Ribavirin therapy.</p> <p>Contact Precautions for the duration of symptoms.</p>
Metapneumovirus (Human) in an immunocompromised patient not receiving Ribavirin therapy	Contact	Private Room No negative air pressure required.	<ul style="list-style-type: none"> Wear a Surgical style mask with face shield or surgical style mask plus goggles if the patient is unable to control respiratory secretion. Instruct patient to perform hand hygiene after contact with respiratory secretions. Staff must not touch eyes. For more information see <i>ICM</i> Policy 5.30, Contact Precautions 	Duration of Symptoms.
Metapneumovirus (Human) in a patient with an intact immune system and not receiving Ribavirin therapy	Standard	Any room Duration of Precautions Duration of Symptoms		

IF A DISEASE OR CONDITION IS NOT LISTED IN THIS TABLE USE STANDARD PRECAUTIONS				
DISEASE/CONDITION	PRECAUTIONS	ROOM PLACEMENT	SPECIAL INSTRUCTIONS	DURATION OF PRECAUTIONS
Methicillin-Resistant Staphylococcus aureus (MRSA) – Infection	Contact	Private room or may cohort with other MRSA patient	<ul style="list-style-type: none"> Discontinue Precautions after consultation with the ICED,* x 5-1106 or pager 16167. For more information see <i>ICM</i> Policy 5.30, Contact Precautions 	See criteria listed in <i>ICM</i> Policy 5.30, Contact Precautions under MRSA
Multi-Drug Resistant Organism (MDRO) – Infection or Colonization (ex., ESBLs, resistant <i>S. pneumoniae</i> , <i>Burkholderia cepacia</i> , resistant gram negative rods)	Contact	Private room or may cohort with another patient with the same organism	<ul style="list-style-type: none"> Discontinue Precautions after consultation with the ICED,* x 5-1106 or pager 16167. For more information see <i>ICM</i> Policy 5.30, Contact Precautions 	Until all devices are DC'd and patient does not soil environment
Mumps (infectious parotitis)	Droplet	Private room, no special ventilation required. Keep door closed. Exception: If patient on E1, place in Room E139 only. See Appendix B.	<ul style="list-style-type: none"> Surgical style mask with face shield or surgical style mask plus goggles for persons entering room. Patient should wear surgical style mask when leaving room Promptly notify the ICED,* x 5-1106 or pager 16167 Report promptly to Santa Clara County Health Department (408) 885-4214. For more information see <i>ICM</i> Policy 5.41, Droplet Precautions 	Until 9 days after the onset of swelling
<i>Neisseria meningitides</i> , invasive disease (meningitis, pneumonia, sepsis) <i>See Meningitis</i>				
Norovirus (Norwalk virus) diarrhea	Contact	Private room	<ul style="list-style-type: none"> Avoid use of shared electronic thermometers For more information see <i>ICM</i> Policy 5.30, Contact Precautions 	48 hours after diarrhea has resolved.
Parainfluenza	Standard	Any room		

IF A DISEASE OR CONDITION IS NOT LISTED IN THIS TABLE USE STANDARD PRECAUTIONS				
DISEASE/CONDITION	PRECAUTIONS	ROOM PLACEMENT	SPECIAL INSTRUCTIONS	DURATION OF PRECAUTIONS
Parvovirus B19 – patient in aplastic crisis	Droplet	Private room, no special ventilation required. Keep door closed. Exception: If patient on E1, place in Room E139 only. See Appendix B.	<ul style="list-style-type: none"> Pregnant HCWs should not enter the room. Surgical style mask with face shield or surgical style mask plus goggles for persons entering room. Patient should wear surgical style when leaving room. Promptly notify the ICED,* x 5-1106 or pager 16167 Report promptly to Santa Clara County Health Department (408) 885-4214. 	For 7 days
Parvovirus B19 (fifth disease or Erythema infectiosum)- in an immunocompromised patient with chronic disease	Droplet	Private room, no special ventilation. Keep door closed. Exception: If patient on E1, place in Room E139 only. See Appendix B.	<ul style="list-style-type: none"> Pregnant HCWs should not enter the room. Surgical style mask with face shield or surgical style mask plus goggles for persons entering room. Patient should wear surgical style mask when leaving room Promptly notify the ICED,* x 5-1106 or pager 16167 Report promptly to Santa Clara County Health Department (408) 885-4214. 	For duration of hospitalization
Pediculosis (Lice)	Contact	Private room	For more information see <i>ICM</i> Policy 5.30, Contact Precautions and 6.50, Pediculosis Exposure Follow-up.	For 24 hours after treatment is completed.
Pertussis (whooping cough)	Droplet	Private room, no special ventilation required. Keep door closed. Exception: If patient on E1, place in Room E139 only. See Appendix B.	<ul style="list-style-type: none"> Surgical style mask with face shield or surgical style mask plus goggles for persons entering room. Patient should wear surgical style when leaving room Promptly notify the ICED,* x 5-1106 or pager 16167 Report promptly to Santa Clara County Health Department (408) 885-4214. For more information see <i>ICM</i> Policy 5.41, Droplet Precautions 	Until 5 days after initiation of appropriate antibiotic therapy
Plague, Bubonic	Standard	Any room		

IF A DISEASE OR CONDITION IS NOT LISTED IN THIS TABLE USE STANDARD PRECAUTIONS				
DISEASE/CONDITION	PRECAUTIONS	ROOM PLACEMENT	SPECIAL INSTRUCTIONS	DURATION OF PRECAUTIONS
Plague, pneumonic <i>Yersinia pestis</i>	Droplet	Private room, no special ventilation required. Keep door closed. Exception: If patient on E1, place in Room E139 only. See Appendix B.	<ul style="list-style-type: none"> Surgical style mask with face shield or surgical style mask plus goggles for persons entering room. Patient should wear surgical style mask when leaving room Promptly notify the ICED,* x 5-1106 or pager 16167 Report promptly to Santa Clara County Health Department (408) 885-4214. For more information see <i>ICM</i> Policy 5.41, Droplet Precautions 	For 48 hours after appropriate antibiotic therapy is initiated
Pneumonia <ul style="list-style-type: none"> Bacterial (including pneumococcal), and viral not listed elsewhere Mycoplasma 	Standard Droplet	Any room Private room. No special ventilation required. Keep door closed. Exception: If patient on E1, place in Room E139 only. See Appendix B.	For more information see <i>ICM</i> Policy 5.40, Respiratory Hygiene/Etiquette Program <ul style="list-style-type: none"> Surgical style mask with face shield or surgical style mask plus goggles for persons entering room. Patient should wear surgical style mask when leaving room Promptly notify the ICED,* x 5-1106 or pager 16167 For more information see <i>ICM</i> Policy 5.41, Droplet Precautions 	Durations of illness Duration of illness
Pneumocystis carinii pneumonia (PCP)	Standard	Any room		
Poliomyelitis	Contact	Private room	<ul style="list-style-type: none"> Promptly notify the ICED,* x 5-1106 or pager 16167 For more information see <i>ICM</i> Policy 5.30, Contact Precautions 	
Q Fever	Standard	Any room		

IF A DISEASE OR CONDITION IS NOT LISTED IN THIS TABLE USE STANDARD PRECAUTIONS				
DISEASE/CONDITION	PRECAUTIONS	ROOM PLACEMENT	SPECIAL INSTRUCTIONS	DURATION OF PRECAUTIONS
Rabies	Droplet	Private room, no special ventilation required. Keep door closed. Exception: If patient on E1, place in Room E139 only. See Appendix B.	<ul style="list-style-type: none"> Surgical style mask with face shield or surgical style mask plus goggles for persons entering room. Patient should wear surgical style mask when leaving room Promptly notify the ICED,* x 5-1106 or pager 16167 Report promptly to Santa Clara County Health Department (408) 885-4214. For more information see <i>ICM</i> Policy 5.41, Droplet Precautions 	Duration of hospitalization
Rash, generalized, etiology unknown	Respiratory and Contact	Private room with negative air pressure and an ante room. Keep door closed.	<ul style="list-style-type: none"> N95 mask for staff entering the room. Only staff immune to childhood illnesses should enter room. 	To be determined when diagnosis is made
Resistant Microorganisms, i.e. Resistant Pseudomonas, Burkholderia, ESBL, etc., <i>See MDRO</i>				
Respiratory Infections-undiagnosed (cough, fever, upper lobe pulmonary infiltrate) and not listed elsewhere	Respiratory and Contact	Negative Air Pressure Room with anteroom. Keep door closed.	<ul style="list-style-type: none"> N95 mask for persons entering room. Patient to wear surgical mask when leaving room. Gown and gloves must be worn when entering the room For more information see <i>ICM</i>, IC-Policy 5.30, Contact Precautions and IC Policy 5.40, Respiratory Precautions. 	Until diagnosis made, institute appropriate precautions.
Respiratory Syncytial Virus (RSV) in an immunocompromised host receiving Ribavirin Therapy	Ribavirin Precautions and Contact	Private room, negative air pressure. Keep door closed. If patient on E1 place in room E139. (Refer to Appendix B of this policy.)	<ul style="list-style-type: none"> Every time, upon entry into room, wear gown and gloves. For more information see <i>ICM</i> Policy 5.30, Contact Precautions Pregnant healthcare workers must not care for patient. <i>Ribavirin Precautions Include:</i> N95 mask for persons entering room during a treatment. 	Ribavirin Precautions for the duration of Ribavirin therapy. Contact Precautions for the duration of symptoms.

IF A DISEASE OR CONDITION IS NOT LISTED IN THIS TABLE USE STANDARD PRECAUTIONS				
DISEASE/CONDITION	PRECAUTIONS	ROOM PLACEMENT	SPECIAL INSTRUCTIONS	DURATION OF PRECAUTIONS
			<ul style="list-style-type: none"> Gloves and gown must be worn when in contact with the patient. Remove your soft contacts or wear goggles Follow instructions on the Ribavirin precautions sign. For more information regarding Ribavirin contact the RT shift supervisor (37709) 	
Respiratory Syncytial Virus (RSV) in an immunocompromised patient not receiving Ribavirin therapy	Contact	Private Room No negative air pressure required.	<ul style="list-style-type: none"> Wear a Surgical style mask with face shield or surgical style mask plus goggles if the patient is unable to control respiratory secretion. Instruct patient to perform hand hygiene after contact with respiratory secretions. Staff must not touch eyes. For more information see <i>ICM</i> Policy 5.30, Contact Precautions 	Duration of Symptoms.
Respiratory Syncytial Virus (RSV) in a patient with an intact immune system and not receiving Ribavirin therapy	Standard	Any room Duration of Precautions Duration of Symptoms		
Rotavirus See <i>Gastroenteritis</i>				
Rubella (German measles)	Droplet	Private room, no special ventilation required. Keep door closed. Exception: If patient on E1, place in Room E139 only. See Appendix B.	<ul style="list-style-type: none"> No mask necessary for immune care-givers and visitors. Patient to wear surgical style mask when leaving room. Persons who are not immune to rubella should not enter room. Promptly notify the ICED,* x 5-1106 or pager 16167 Report promptly to Santa Clara County Health Department (408) 885-4214. For more information see <i>ICM</i> Policy 5.41, Droplet Precautions and 6.21, Rubella Exposure Follow-up. 	Until 7 days after onset of rash. Infants with congenital rubella shed virus for months.
Rubeola, See <i>Measles</i>				

IF A DISEASE OR CONDITION IS NOT LISTED IN THIS TABLE USE STANDARD PRECAUTIONS				
DISEASE/CONDITION	PRECAUTIONS	ROOM PLACEMENT	SPECIAL INSTRUCTIONS	DURATION OF PRECAUTIONS
Salmonella, See <i>gastroenteritis</i>				
SARS (Severe Acute Respiratory Syndrome)	Respiratory and Contact	Private, negative air pressure room with ante-room. Keep door closed.	<ul style="list-style-type: none"> • N95 respirator mask for hospital personnel entering room. • Requires fit testing by designated individual. See manager for more information. • Patient to wear surgical style mask when leaving room. • Promptly notify the ICED* x 5-1106 or pager 16167 • Report promptly to Santa Clara County Health Department (408) 885-4214. • For more information see <i>ICM</i> Policy 6.90, SARS Precautions/Isolation 	Duration of hospitalization.
Scabies	Contact	Private room until treatment is completed	For more information see <i>ICM</i> Policy 5.30, Contact Precautions	For 24 hours after treatment is completed
Shigella, See <i>Gastroenteritis</i>				
Smallpox Smallpox Continued	Respiratory and Contact	Private negative air pressure room with anteroom	<ul style="list-style-type: none"> • N 95 respirator mask for staff entering room. • Requires fit testing by designated individual (see manager). • Patient to wear surgical style mask when leaving room. • Promptly notify the ICED* x 5-1106 or pager 16167. • Refer to Bioterrorism and Emergency Preparedness Plan. 	Do NOT discharge from hospital until determined no longer infectious. (Disappearance of scabs generally 14-28 days.)
<i>Staphylococcus aureus</i> Disease	Standard	Any room	May need Contact Precautions if wound drainage is not adequately contained with dressing.	Duration of illness if Contact Precautions needed.

IF A DISEASE OR CONDITION IS NOT LISTED IN THIS TABLE USE STANDARD PRECAUTIONS				
DISEASE/CONDITION	PRECAUTIONS	ROOM PLACEMENT	SPECIAL INSTRUCTIONS	DURATION OF PRECAUTIONS
Streptococcal Disease (Group A) <ul style="list-style-type: none"> • Minor wounds • Major wounds • Pneumonia 	<ul style="list-style-type: none"> • Standard • Contact • Droplet 	Any room Private room Private room, no special ventilation required. Keep door closed. Exception: If patient on E1, place in Room E139 only. See Appendix B.	<ul style="list-style-type: none"> • May need Contact Precautions if wound drainage is not adequately contained with dressing. • Wear a surgical style mask with face shield or surgical style mask with goggles if the wound is irrigated-could cause aerosolization • For more information see <i>ICM</i> Policy 5.30, Contact Precautions. • Surgical style mask with face shield or surgical style mask plus goggles for persons entering room. • Patient should wear surgical style mask when leaving room • For more information see <i>ICM</i> Policy 5.41, Droplet Precautions 	If Contact Precautions needed, may DC after 24 hours of effective antibiotic therapy.
Syphilis	Standard	Any room		
Toxic Shock Syndrome	Standard	Any room		
Toxoplasmosis	Standard	Any room		
Tuberculosis, extra-pulmonary	Standard	Any room		
Tuberculosis (TB), Pulmonary and Pharyngeal	Respiratory	Private, negative air pressure room with an anteroom.	<ul style="list-style-type: none"> • N 95 respirator mask for staff entering room. • Requires fit testing by designated individual (see manager). • Patient to wear surgical style mask when leaving room. • Report immediately to the ICED at x 5-1106 or pager 16167. • Report promptly to Santa Clara County Health Department (408) 885-4214. • Physician to complete "Report of Discharge/Treatment Plan" and fax to Santa Clara County Disease Control 24 hours prior to discharge. 	Respiratory Precautions can only be discontinued after consultation with ICED. See <i>ICM</i> Policy 6.70, Suspect or Confirmed Pulmonary Tuberculosis, for criteria.

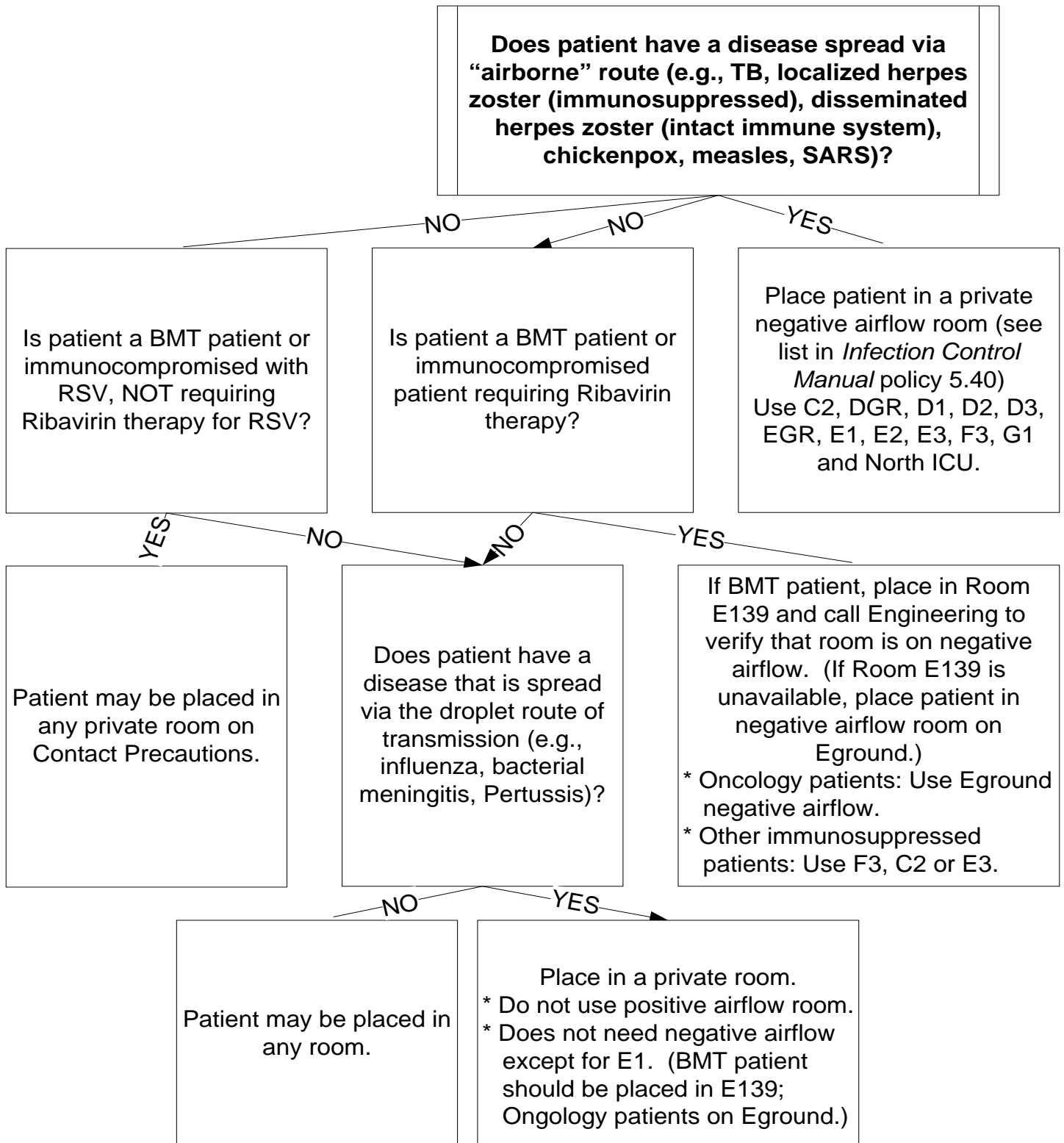
IF A DISEASE OR CONDITION IS NOT LISTED IN THIS TABLE USE STANDARD PRECAUTIONS				
DISEASE/CONDITION	PRECAUTIONS	ROOM PLACEMENT	SPECIAL INSTRUCTIONS	DURATION OF PRECAUTIONS
			<ul style="list-style-type: none"> Do not discharge patient until approval obtained from Santa Clara County Health Dept. For more information see <i>ICM</i> Policy 5.40, Respiratory Precautions, 6.70, Tuberculosis Precautions, 9.0, Pulmonary Tuberculosis Exposure Control Plan. 	
Tularemia	Standard	Any room		
Typhoid Fever (<i>Salmonella typhi</i>), See <i>Gastroenteritis</i>				
Vaccinia, Generalized	Contact	Private room.		
Valley Fever (Coccidiomycosis)	Standard	Any room		
Vancomycin resistant enterococcus (VRE) – Infection or Colonization or with a history of during a prior hospitalization	Contact	Private room or room with VRE patient	For more information see <i>ICM</i> Policy 5.30, Contact Precautions	Duration of hospitalization
Vancomycin intermediate/resistant Staphylococcus aureus (VISA)	Contact	Private room or room with VISA patient	For more information see <i>ICM</i> Policy 5.30, Contact Precautions	Duration of hospitalization
Varicella, See <i>Chickenpox</i>				
Varicella – Zoster: See <i>Herpes Zoster</i>				
Viral Fevers (Dengue, Yellow fever, Colorado Tick fever)	Standard	Any room		
West Nile Virus	Standard	Any room	<ul style="list-style-type: none"> Report immediately to ICED* at x 5-1106 or pager 16167. Report promptly to Santa Clara County Health Department (408) 885-4214. 	
Whooping Cough: See <i>Pertussis</i>				
Wound Infections				
<ul style="list-style-type: none"> Major (where drainage is not adequately contained with a dressing) 	Contact	Private Room	<ul style="list-style-type: none"> Contact Precautions necessary if the patient's hygiene is poor and soiling of the environment is likely. For more information see <i>ICM</i> Policy 5.30, Contact Precautions. 	Until drainage has stopped or can be contained with a dressing.
<ul style="list-style-type: none"> Minor or limited 	Standard	Any Room	Dressing adequately contains all drainage.	

IF A DISEASE OR CONDITION IS NOT LISTED IN THIS TABLE USE STANDARD PRECAUTIONS				
DISEASE/CONDITION	PRECAUTIONS	ROOM PLACEMENT	SPECIAL INSTRUCTIONS	DURATION OF PRECAUTIONS
Yersiniosis <i>See Plague</i>				

* Infection Control and Epidemiology Department

Appendix B

**QUICK REFERENCE GUIDE FOR PLACEMENT OF PATIENTS:
 NEGATIVE AIRFLOW ROOMS**



Appendix C

**QUICK REFERENCE GUIDE FOR PLACEMENT OF PATIENTS:
POSITIVE AIRFLOW ROOMS**

