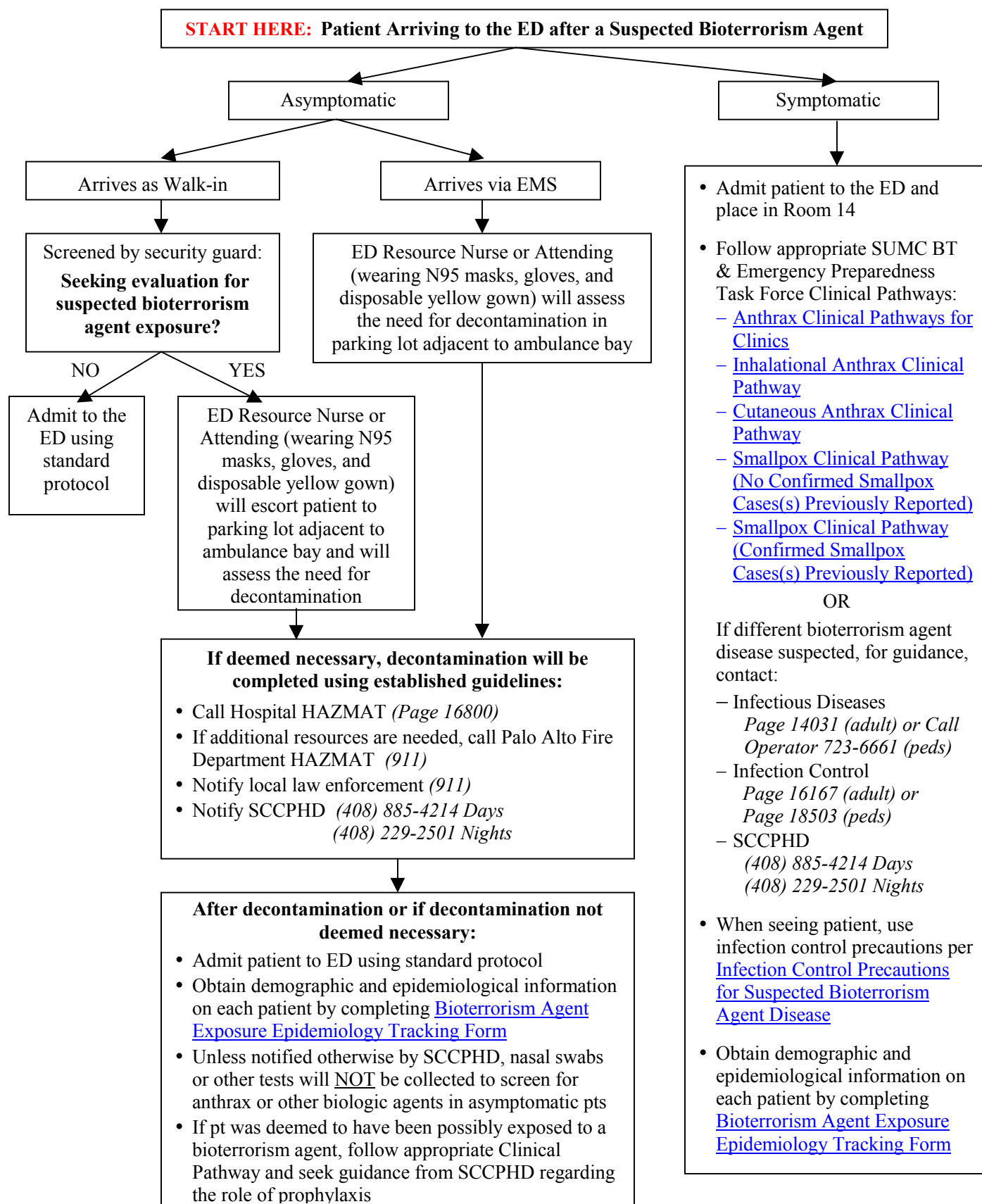


**SUSPECTED EXPOSURE TO BIOTERRORISM AGENT
EMERGENCY DEPARTMENT TRIAGE GUIDELINE (Updated 12/08/01)
SUMC Bioterrorism & Emergency Preparedness Task Force**



IMPORTANT: If at any time, the number of patients arriving to the emergency department from a bioterrorism incident exceeds the staff's ability to care for them with the resources available, activate Code Zebra.